

Bastelbogen Nr. 831w

Wandlaterne mit mittlerer Standardhalterung

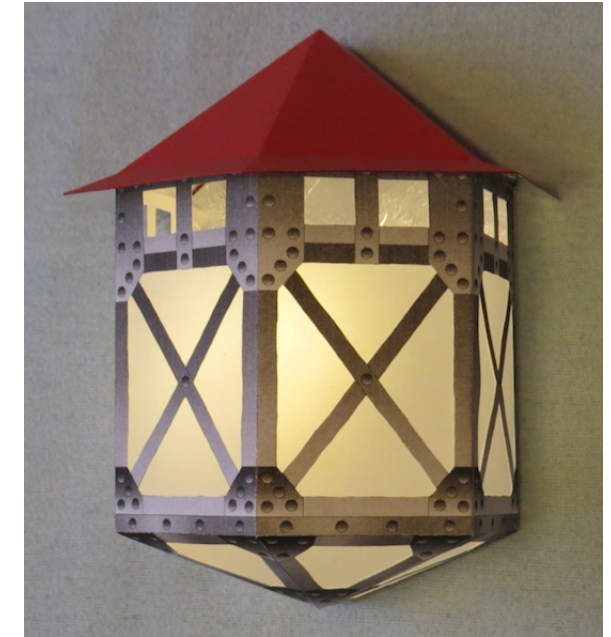
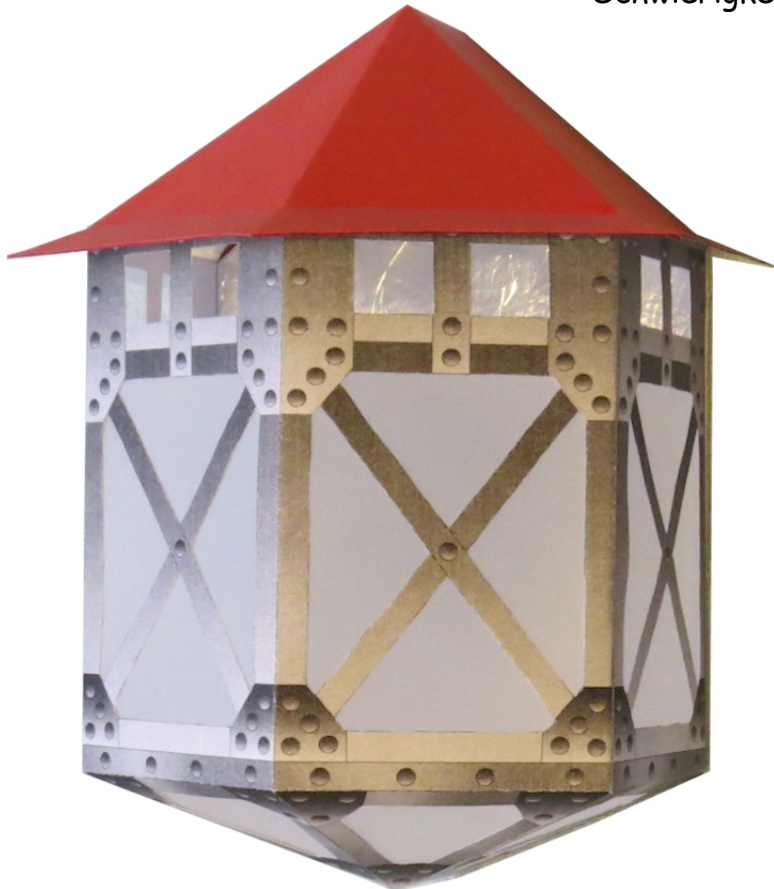
L x B x H : 13,2 cm x 10,7 cm x 17 cm

Seiten : 5 + 1

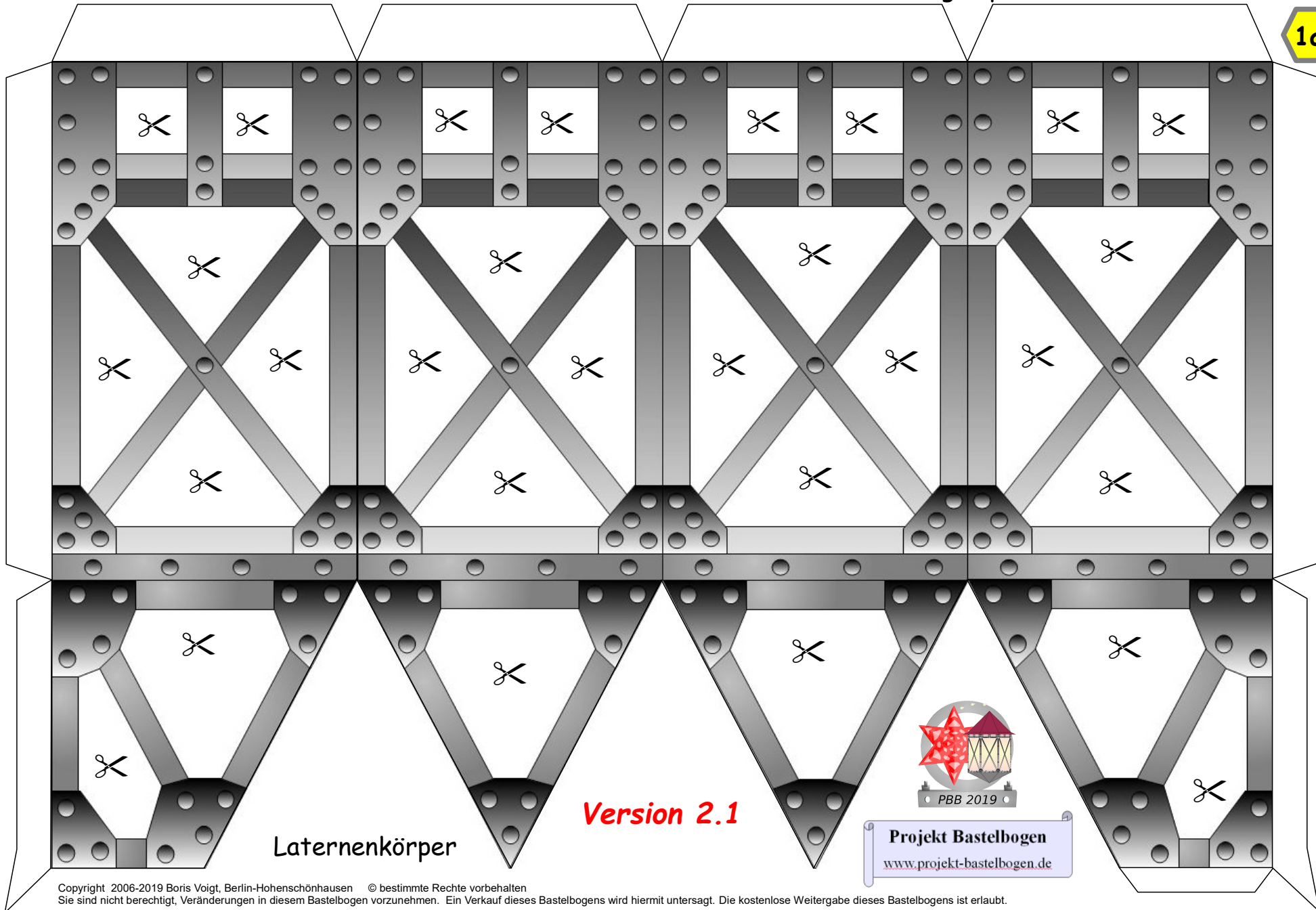
Anzahl der Teile : 17 + 7

Version 2.1

Schwierigkeit: S4 mittelschwer



1a



Laternenkörper

Version 2.1



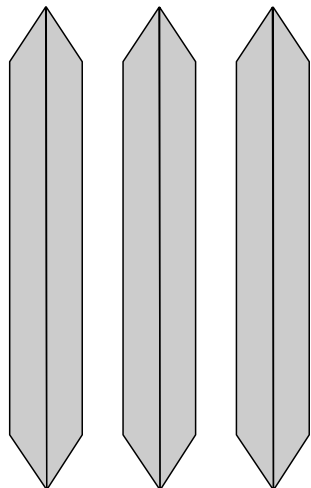
PBB 2019

Projekt Bastelbogen
www.projekt-bastelbogen.de

1b

1c

1d

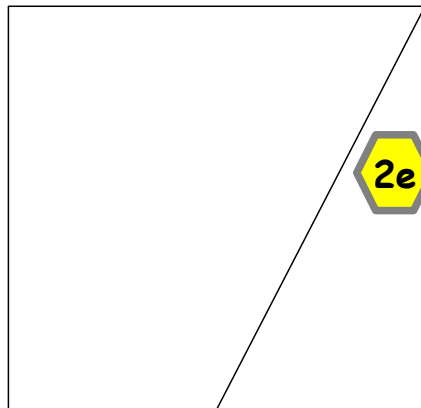
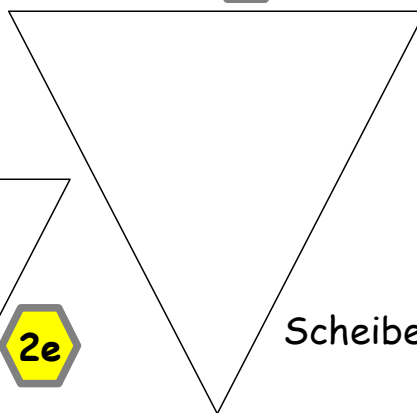


Verbindung der Streben im Unterteil des Laternenkörpers

Version 2.1

2f

2g



2e

Scheiben für Unterteil



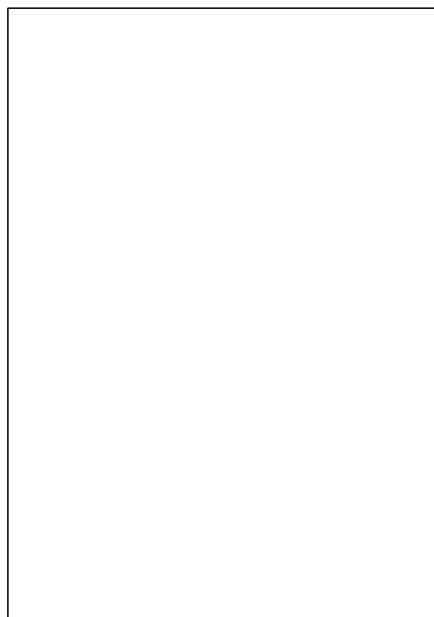
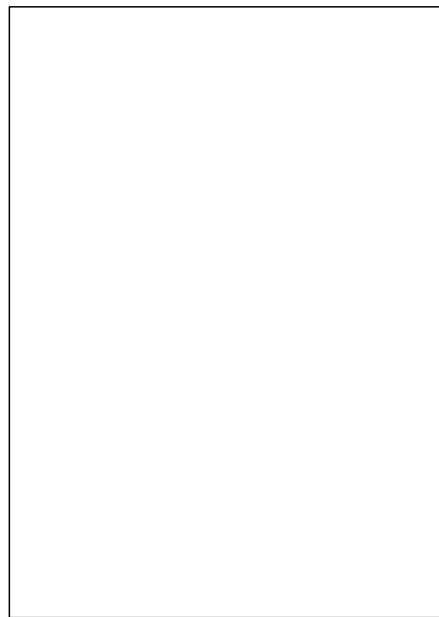
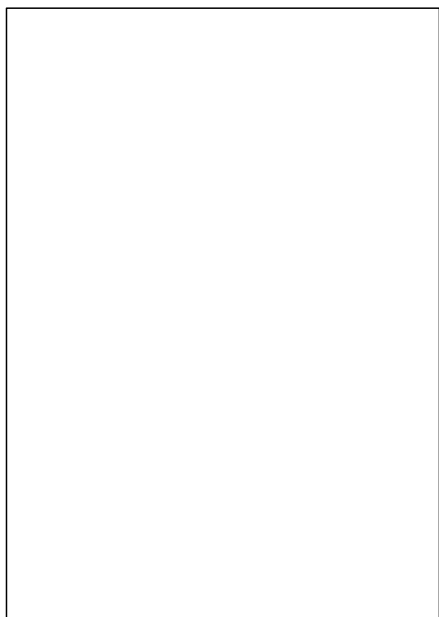
PBB 2019

Projekt Bastelbogen

www.projekt-bastelbogen.de

2h

Bitte auf Kopierpapier ausdrucken.

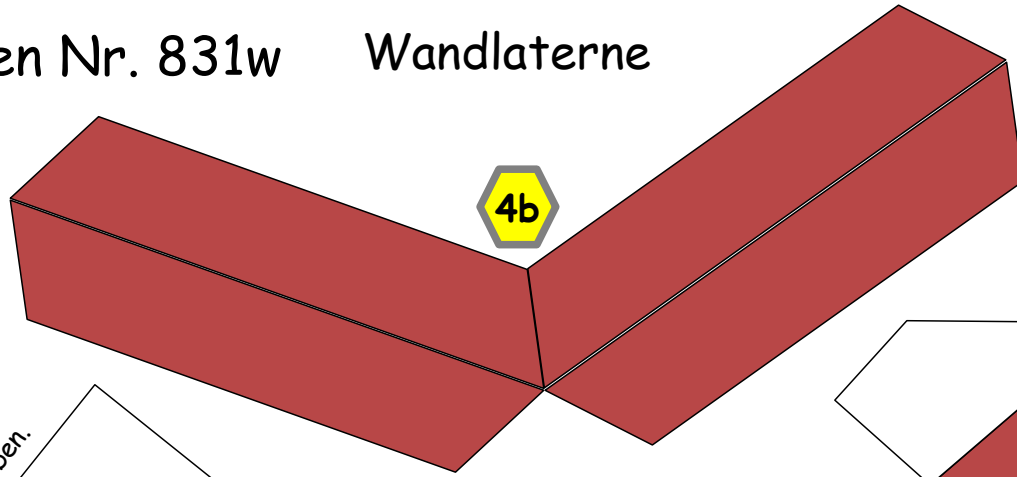


Scheiben für Laternenkörper

2a

bis

2d

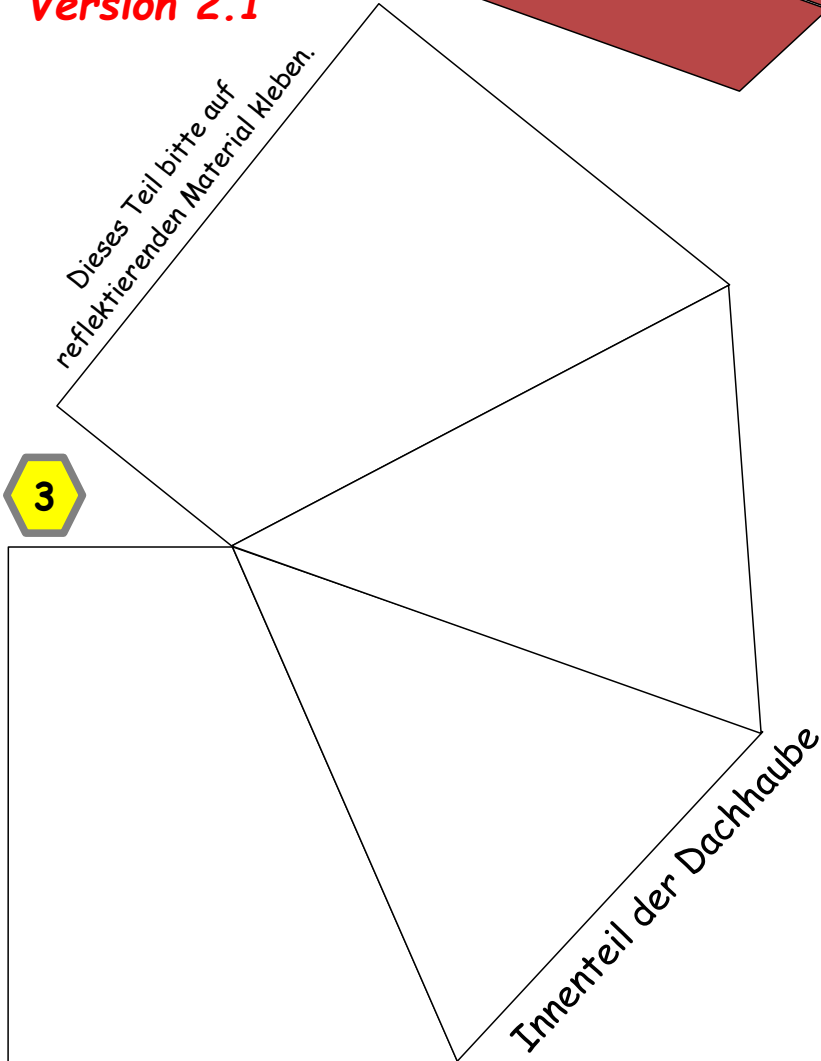


4b

Version 2.1

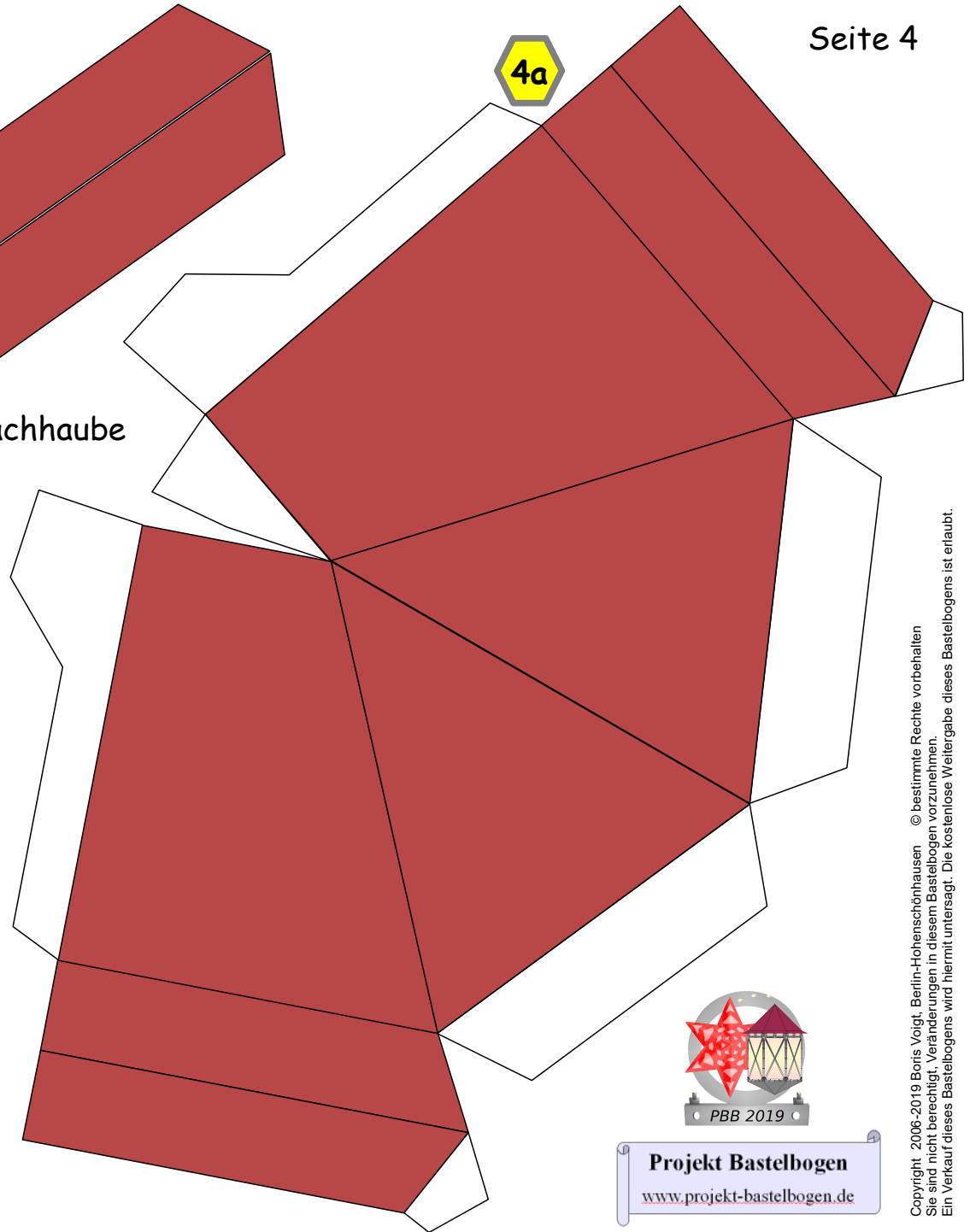
Dieses Teil bitte auf
reflektierendes Material kleben.

3



Innenteil der Dachhaube

Dachhaube



4a



PBB 2019

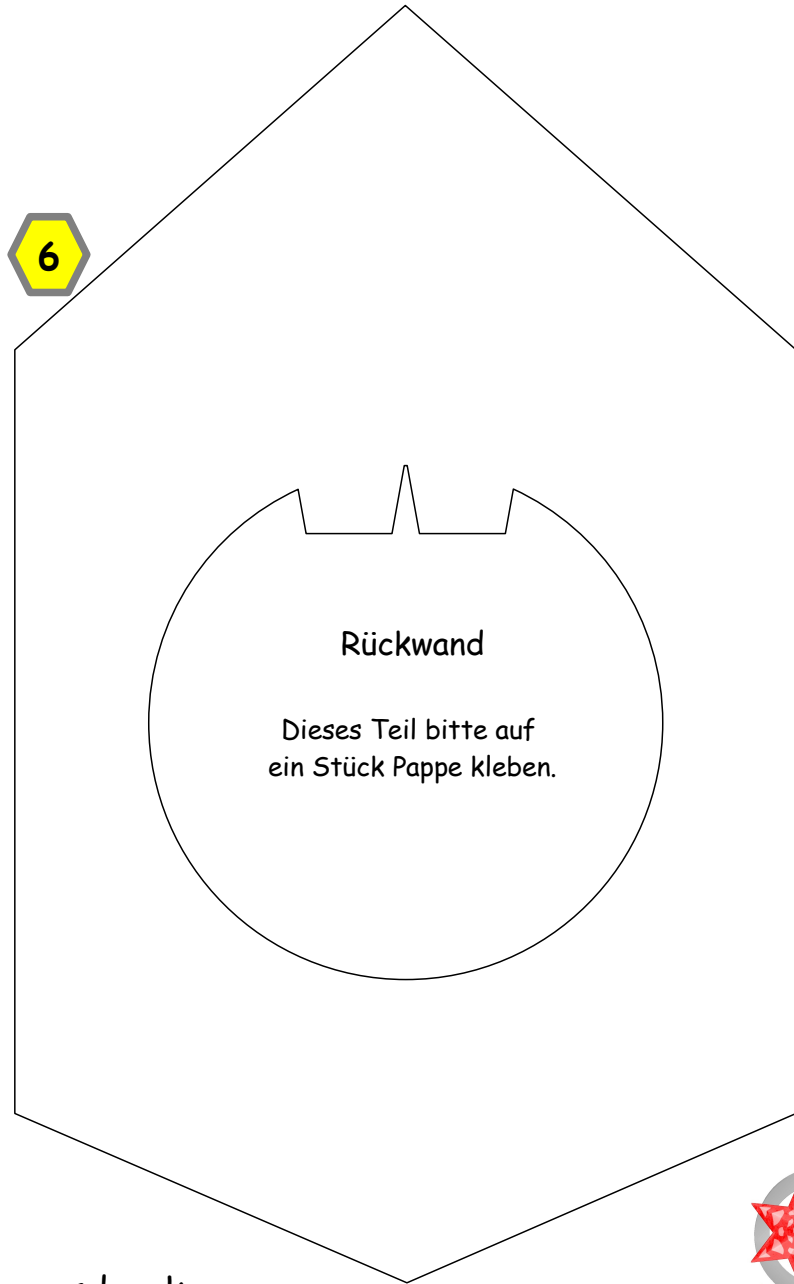
Projekt Bastelbogen
www.projekt-bastelbogen.de

Version 2.1

5



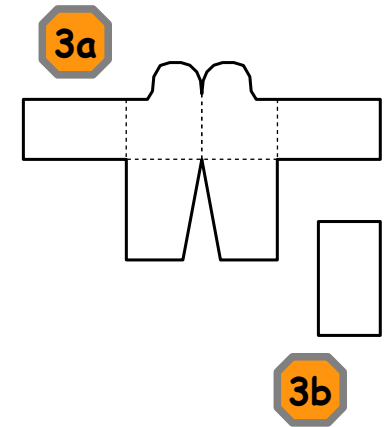
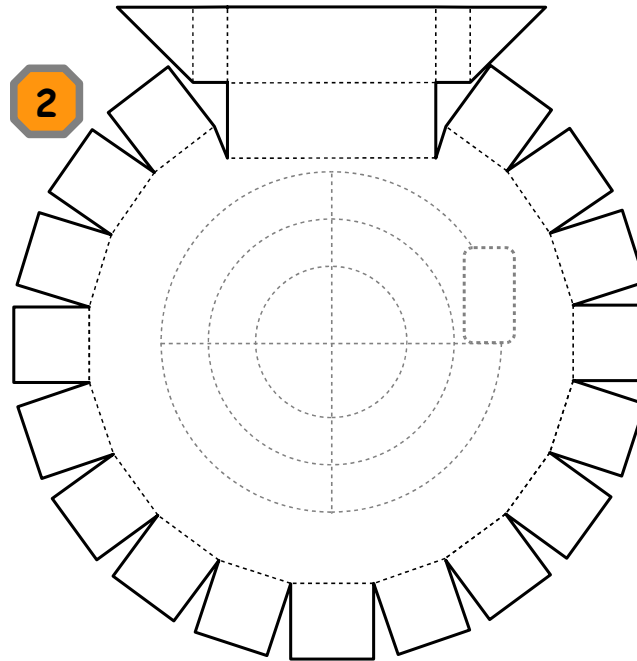
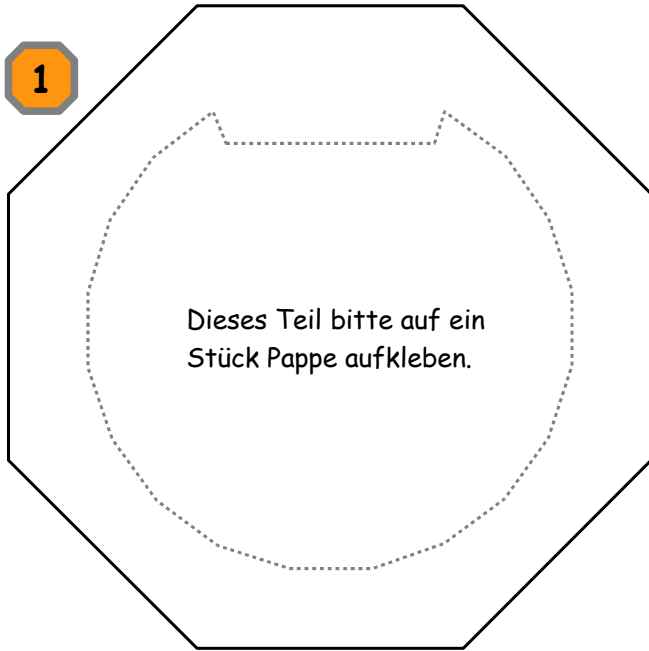
6



Bitte auf Kopierpapier ausdrucken.



Wandlaterne: mittlere Standardhalterung



Bitte auf 160g Papier ausdrucken.

