

Triebwagen TBW12

Schwierigkeit: S6 sehr schwer



Dieser Bastelbogen ist nur für 80g Papier
bzw. Kopierpapier geeignet.



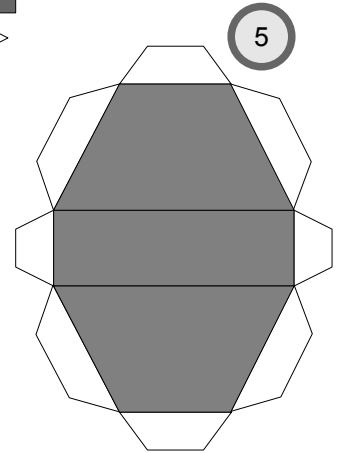
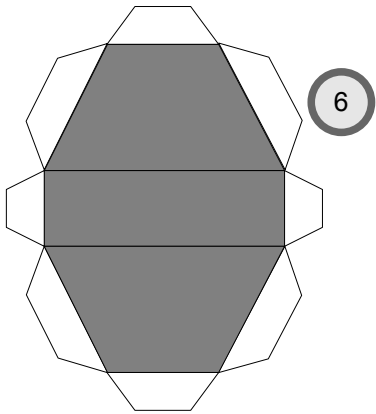
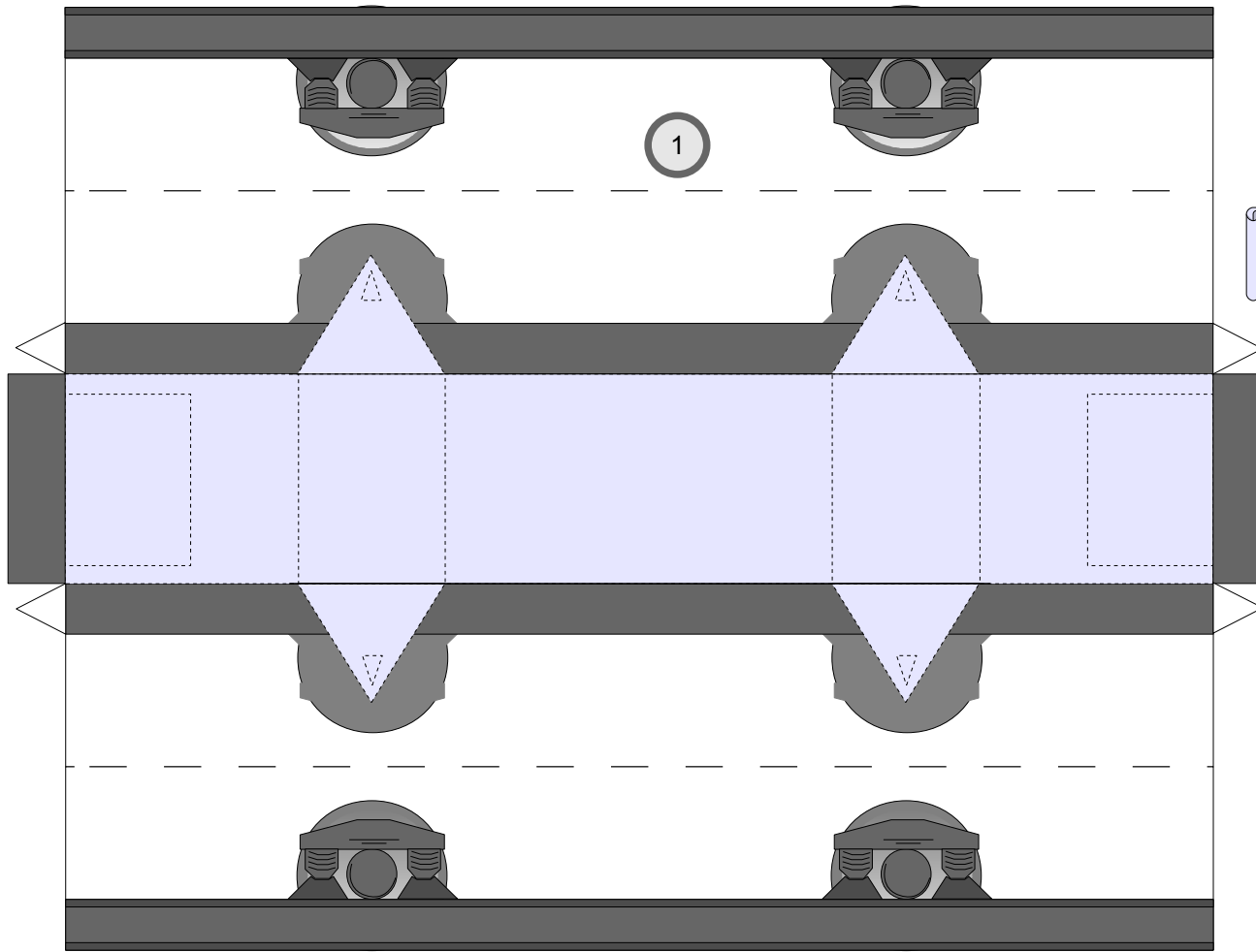
* PBB 2011 *

Bastelbogen Nr. 503a

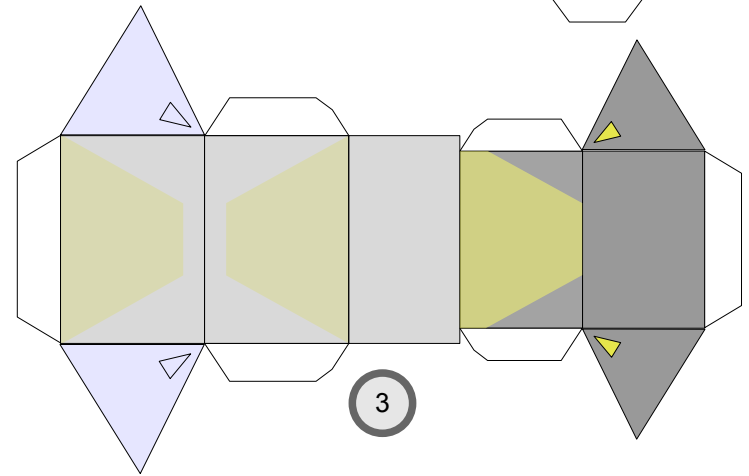
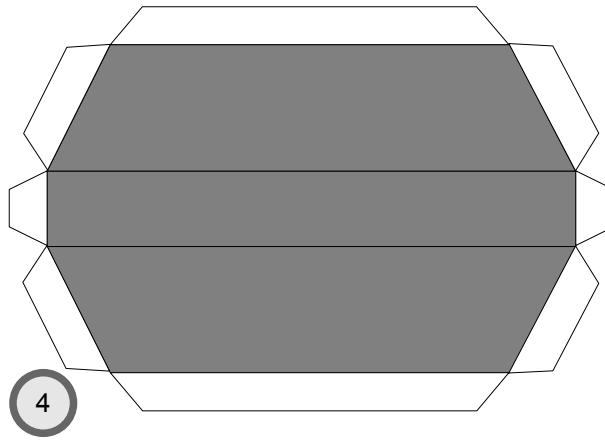
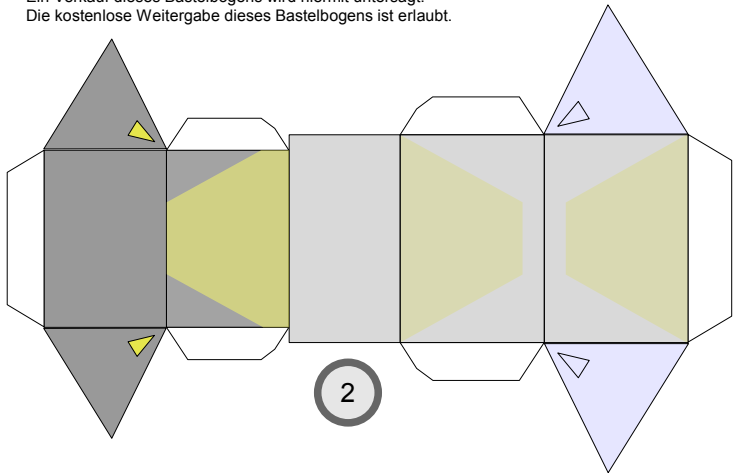
Triebwagen

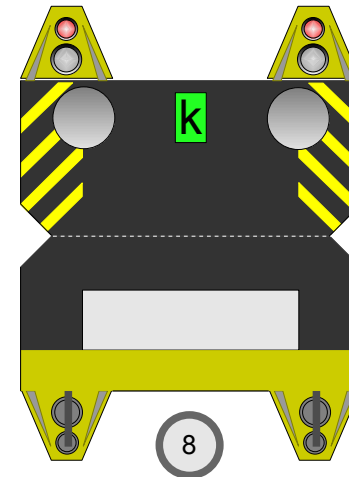
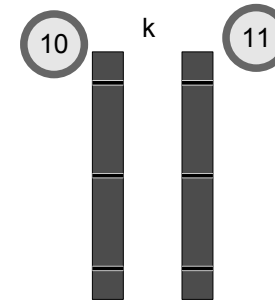
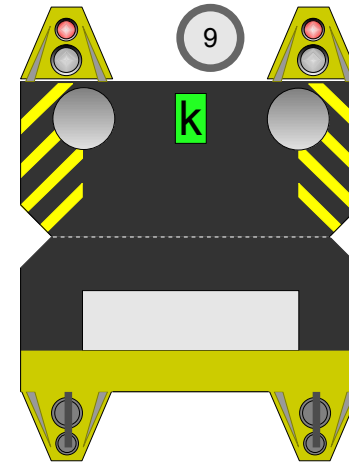
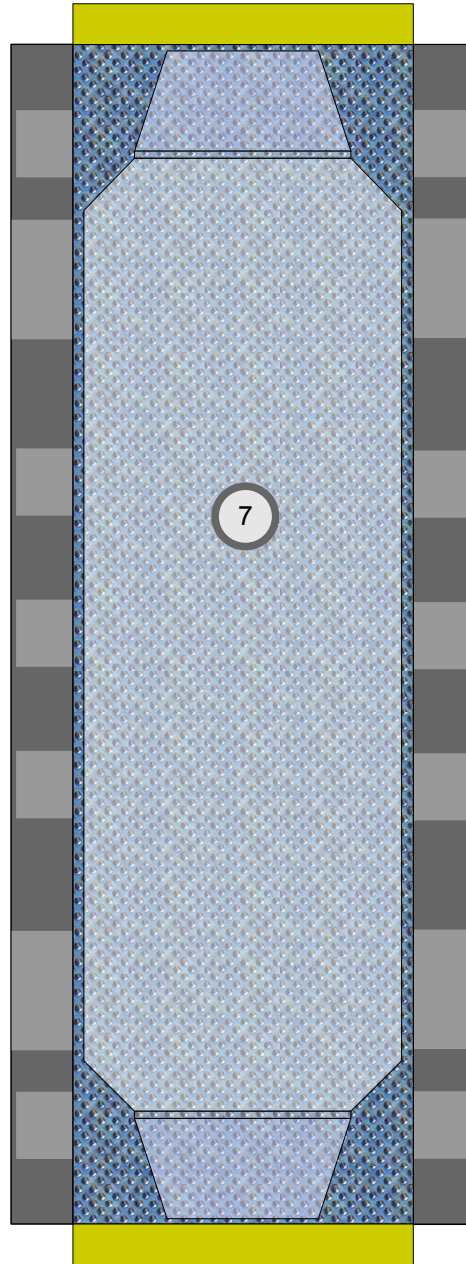
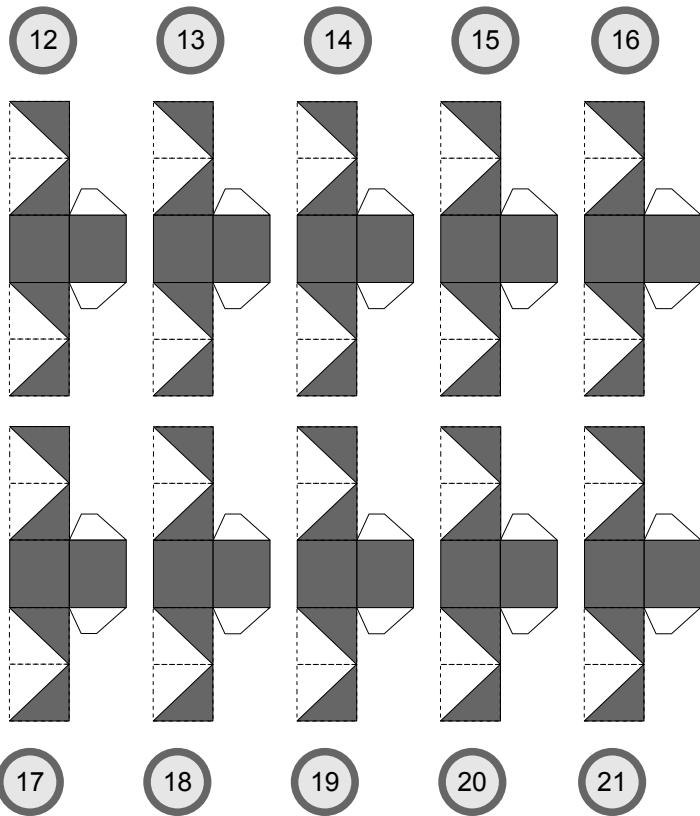


Projekt Bastelbogen
www.projekt-bastelbogen.de



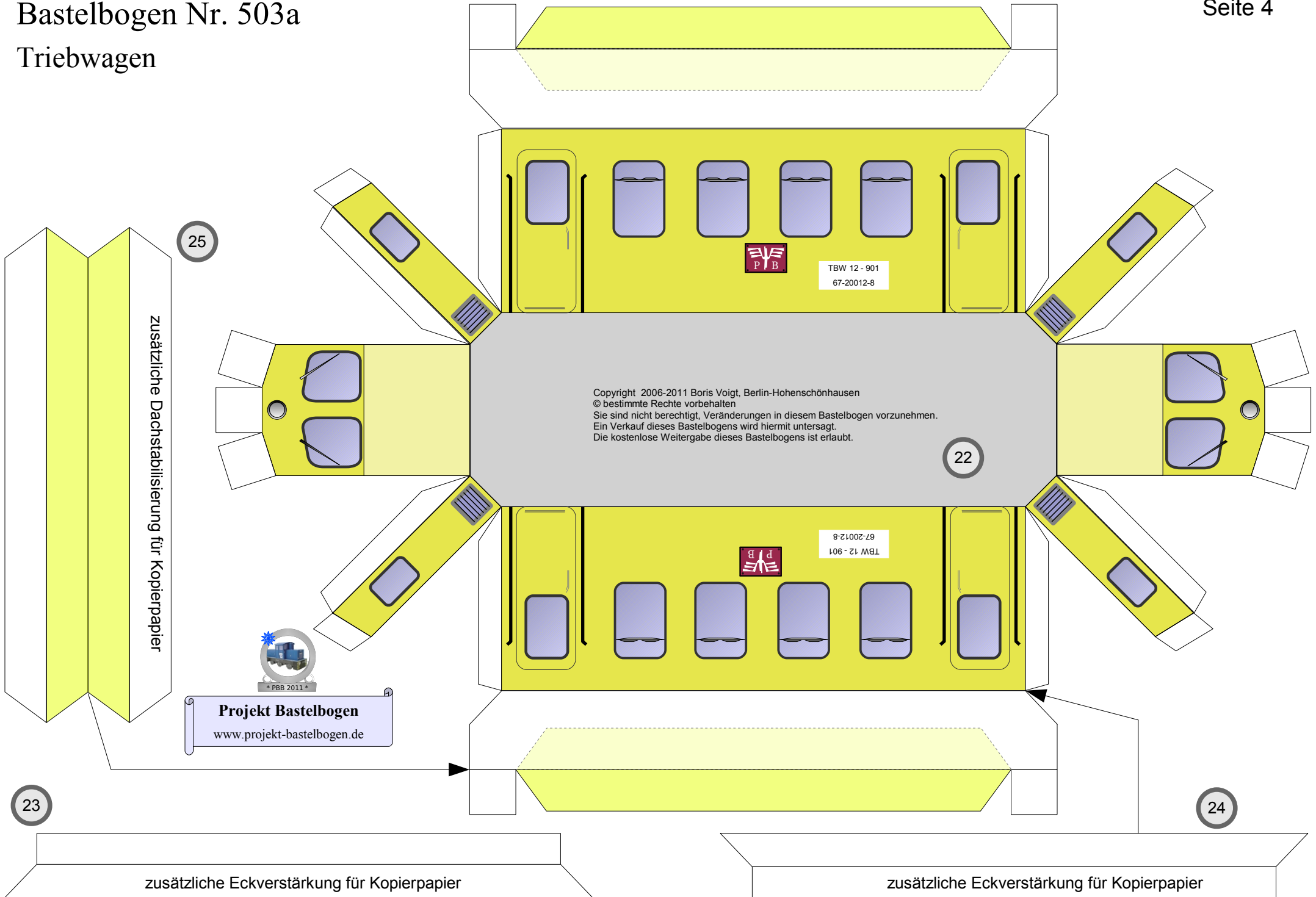
Copyright 2006-2011 Boris Voigt, Berlin-Hohenschönhausen
© bestimmte Rechte vorbehalten
Sie sind nicht berechtigt, Veränderungen in diesem Bastelbogen vorzunehmen.
Ein Verkauf dieses Bastelbogens wird hiermit untersagt.
Die kostenlose Weitergabe dieses Bastelbogens ist erlaubt.



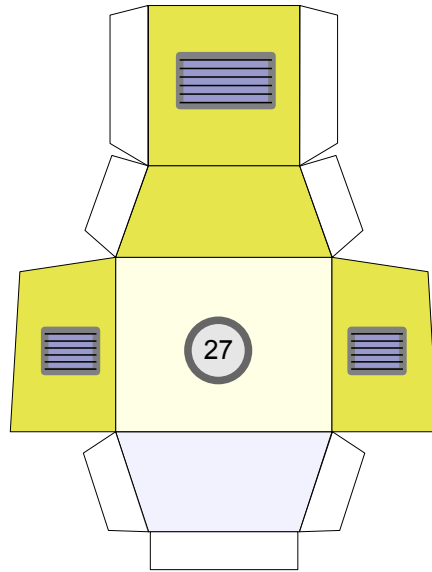
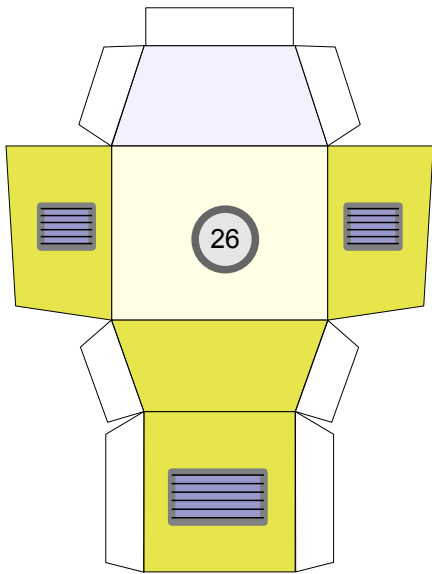


Bastelbogen Nr. 503a

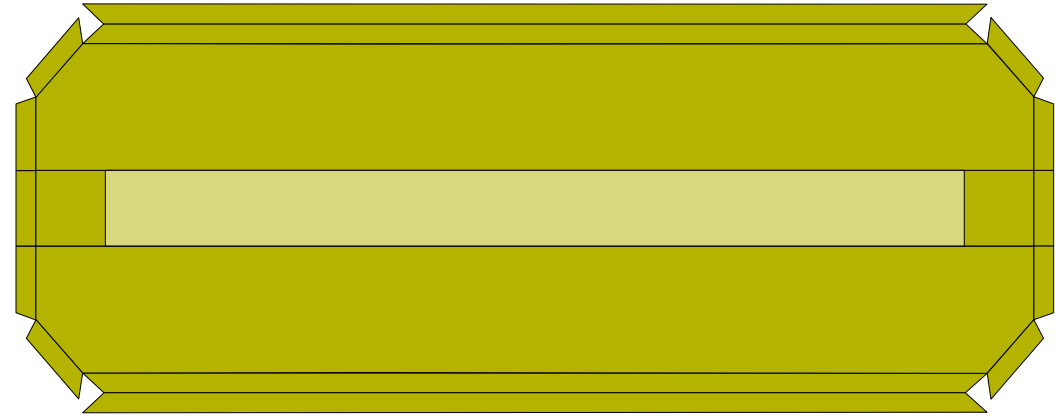
Triebwagen



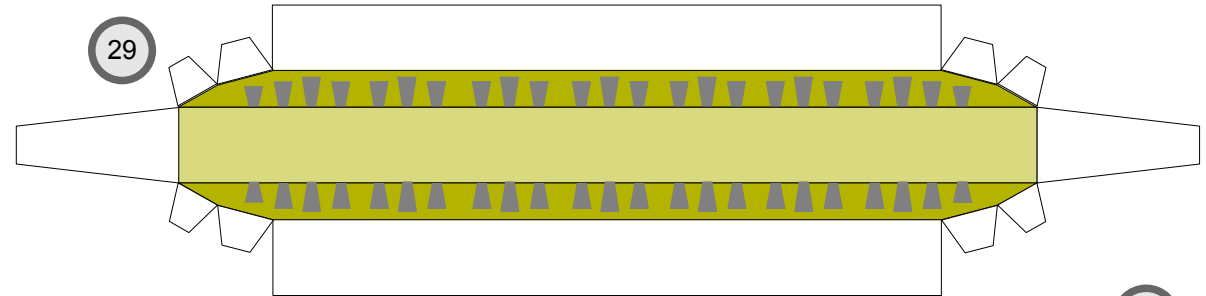
Triebwagen



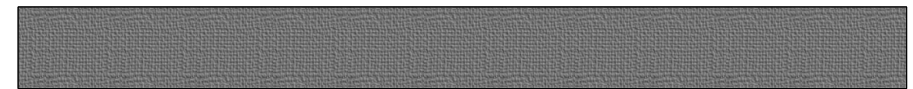
28



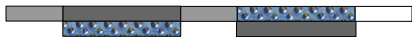
29



30



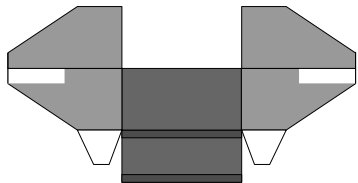
31b



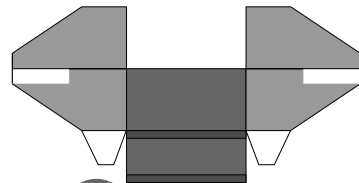
32b



31a



32a



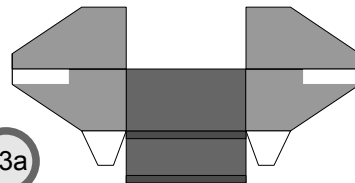
33b



34b



33a



34a

